



# FASHION TECHNOLOGY



# DESTINATION

## HELMo University College in the Walloon region

8200  
STUDENTS

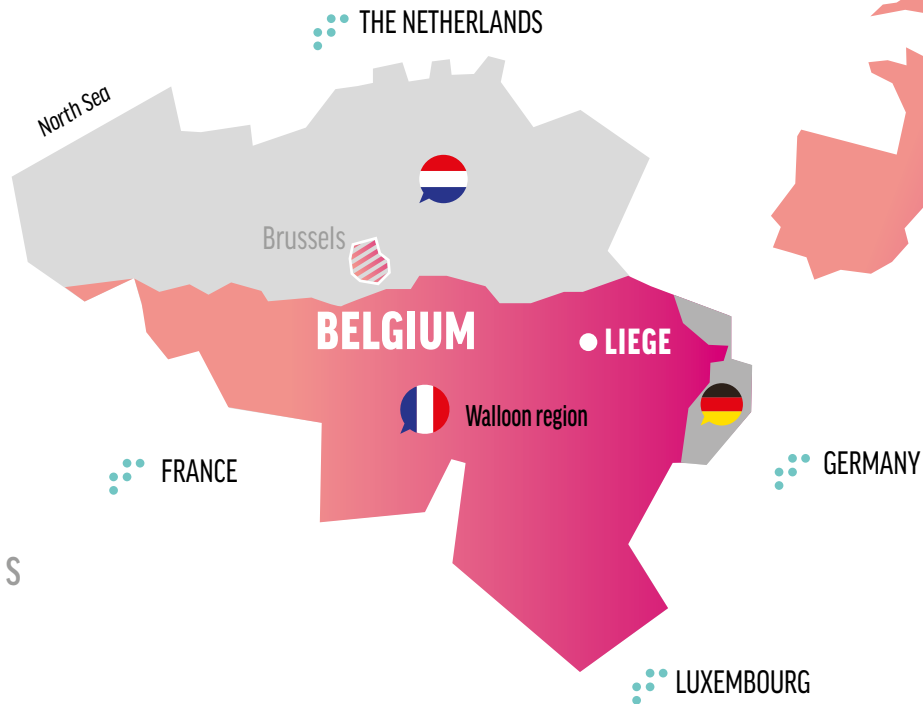
5  
DEPARTMENTS

900  
STAFF  
MEMBERS

+40 BACHELOR,  
MASTER DEGREES AND  
SPECIALIZATIONS

1800  
GRADUATES A YEAR

11 INSTITUTES  
AND 3 CAMPUSES  
in Liège, Loncin, Huy,  
Theux and Verviers





## Studying at HELMo is...



Attending programmes of high quality, which allow students to **be creative and active** during their studies

Working closely with the **local community** and with a **very large network of organizations** willing to help its students meet the requirements of the job market

Having the possibility to participate to **double or triple degree programmes**

Benefiting from a **student based teaching methodology**: disciplines are practical and open to the labour market. The teaching methods used are lectures, discussions in small groups of students, placements, final assignment... In the Master degrees, the methods used are inductive: from case analysis to theoretical justification; an alternation of theory - practice, research missions with a strong link to industries and universities, optional course units and final assignment for students in the last study year

Attending **degree programmes open to the world**: HELMo has signed more than 100 bilateral agreements with institutions of Higher Education in Europe and around the world

Being in an institution which is a **member of thematic networks** (Businet, Comenius Association, EAIE, EASSW, ERACON, FESET, NIBS)

Being allowed to attend courses and lectures in **other institutions** of higher Education

**Doing internship abroad**



## Life at HELMO is...

Participating to **research and innovation projects**

Benefiting from **pedagogical tools and infrastructures, always improved**: new campuses, computer rooms, Wi-fi, e-learning

Being accompanied by a **students' department** and/or an **Educational and social assistance** (workshops, stress management, tutoring...)

**Joining** a students' association, parties, cultural events, sports association and **a lot of projects** in the different departments

Having support from an **international office** for all Erasmus exchanges, internships abroad, intercultural meetings, ...

Always **Lifelong learning**



# DESTINATION



## ••• LIEGE

Coming to HELMo is discovering a very rich and diversified region close to Germany, the Netherlands, France and Luxemburg. Liège has long been described as being one of three sisters, together with Aachen (in Germany) and Maastricht (in the Netherlands).

Studying in Liège is also discovering a city with a rich historical, cultural and industrial past. It is the largest city of the French-speaking community in Belgium and is the economic capital of the Walloon Region. Called "la Cité Ardente" with reference to the independent spirit of its inhabitants, Liège has a lot of museums and prestigious cultural institutions like the Orchestre Philharmonique Royal de Liège, The Opéra Royal de Wallonie or the new Theatre, the Reflektor for music concerts...

As a student town, Liège has an important social life and is crawling with pubs, cinemas, restaurants, sports centres, etc...

From being an old steel-manufacturing-based town, it has successfully undergone a transition into developing high-technology industries and services: with some significant development poles in sectors such as space, biotechnology, transport and logistics...

But the most significant point is that Liège is a warm open-minded town, thanks to its geographical position mixing French, Flemish, Dutch and German cultures.



“LIÈGE-BASTOGNE-LIÈGE”

OPEN-MINDED  
CITY

LE CARRÉ

FOLKLORE  
(TCHANCHÈS-NANÈS)

LIVELY  
CITY

ST TORÈ

ECONOMIC CAPITAL  
OF WALLONIA

VERY RICH AND  
DIVERSIFIED REGION  
CLOSE TO GERMANY  
AND THE NETHERLANDS

WAFFLES

SIROP

MULTICULTURAL  
CITY



BEER

STUDENTS' LIFE

AIRPORT

BOULETS-FRITES

THEATER

OPERA

SPACE CENTER

LOGISTICS

JEUDREDI

WITH A RICH  
HISTORICAL, CULTURAL  
AND INDUSTRIAL PAST

CHOCOLATE

STANDARD DE LIÈGE

LES FRÈRES DARDENNE  
(MOVIE MAKERS)

BIOTECHNOLOGY

MIX OF FRENCH, FLEMISH,  
DUTCH AND GERMAN  
CULTURES

MUSIC PLAYERS

# DESTINATION



## THE INTERNATIONAL RELATIONS OFFICE AT HELMO

The main international Relations office is managed by :



**Julie Guiot**  
(Head of the department)  
j.guiot@helmo.be



**Manon Habay**  
(incoming and outgoing students officer)  
m.habay@helmo.be  
+32 4 220 61 07

It works in close collaboration with the international coordinators from the different study programmes.

One of the most important aims of the international office is to increase the number of exchange students (outgoing and incoming).

Therefore, incoming students are very welcome to HELMO:

**Compulsory welcome days** at the beginning of each semester (in September and in January) – social, cultural, linguistic and integration activities are offered during these days. Students usually meet the international coordinator of the study programmes, they also have the opportunity to discover the department and to meet other Erasmus students. They have to attend a conference about the Belgian Culture and habits.



A **module called “Belgian Culture and Heritage”**: It gives incoming students the opportunity to visit Belgian towns, to taste traditional Belgian meals, to discover regional product makers. It can be included in the Learning agreement for 2 ECTS.

### French as a foreign language

As most of the study programmes are taught in French, we recommend students to have a very good level in French; in some departments, the B1 level is required.

Therefore, in order to help the incoming students improve it, HELMo offers a French course (5ECTS) during the autumn semester. And during the spring semester, HELMo has a partnership with ISLV - University of Liège (5 ECTS).

However, the business department offers a 30 ECTS programme in English ONLY during the autumn semester.

**Academic recognition:** HELMo adheres to the fundamental aims of the Bologna process, and to transcribe the records obtained abroad, HELMo uses the Egracons system (<http://egracons.eu/>).

**ESN Team** was set up to organize activities for incoming students, to help them during their stay in Liège;



### The ESN will:

Pick up students on arrival	Help students find accommodation
Advise about events at HELMo, in Liege or even in Belgium (concerts,...)	Organize sport, cultural and social activities
Do not hesitate to check our facebook page	



Further information can be found on <https://www.helmo.be/CMS/Profils/International/EN/Students-IN.aspx>.

# FASHION TECHNOLOGY DEPARTMENT



## Introduction

### ••• A UNIVERSITY COLLEGE ON THE MOVE

Created in 1999, the HELMo Fashion department is, since 2007, established in the Natalis Business Center, Longdoz neighbourhood, close to the Médiacité shopping center. The practice lessons are held in workshop-classes designed with a new and wide infrastructure.

HELMo Fashion offers a unique training programme in the French-speaking community of Belgium, giving students the chance to develop technical and artistic skills, at the leading edge of the professional level. The richness and variety of trainings provided by HELMo Fashion offer to students a full preparation to many jobs in the fashion design industry through theory lessons, practice sessions and internships in partner companies.

In order to train young all-rounder professionals, the programme is designed to be complete and is built on 3 complementary grounds (artistic, technical and general lessons).

Students will be able to create a model, from the sketch to the final product, while coping with the real professional obligations.

The training process is at human scale, allowing students to work under close supervision while working out their personal projects. Lessons are given in a professional workshop-like environment offering to students an immersive experience in real conditions.

From the very beginning of the first year, students are asked to design models based on a scenery or a concept from their own inspiration.







**The training aims at the development of the following skills:**

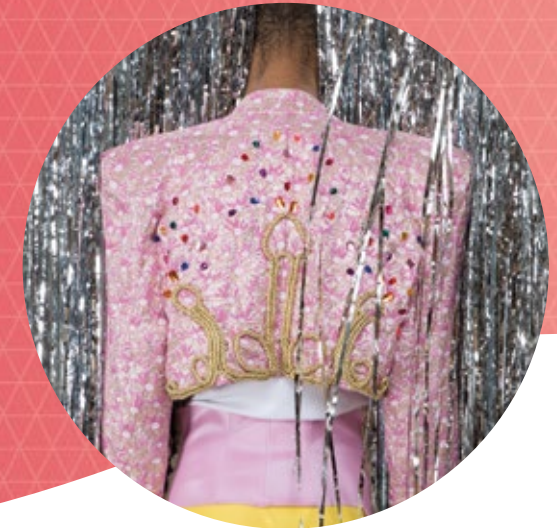
- Design trends and models, be able to express them through a technically finished pattern: technical skills (model-making, cut) as well as artistic skills (dress designing).
- Know the creation processes and the industrial constraints and therefore manage the model-making: technical and organisational skills.
- To be on the look-out for the market, for the consumers' need, understanding the marketing mechanisms, and therefore create the environment for a commercial success: management and commercial skills.

**Frequently followed orientation among our graduates:**

- Master in textile design
- Master in fashion business marketing
- Master in merchandising



# INCOMING STUDENTS



## Placement

- Opportunities to find an internship in our partner companies during Q2 after taking Q1 courses



## Other projects

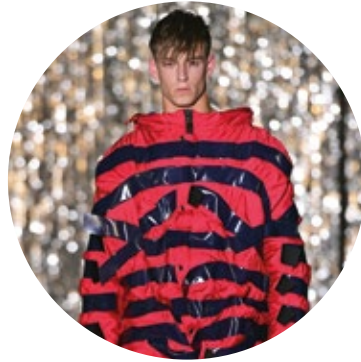
Students are requested to be involved in internal or external projects: organise and/or take part to fashion shows, exhibitions, shows, contests, in order to confront the real obligations of the job.

- Taking part in various visits : Fashion museum in Antwerp, Brussels or Paris,
- Taking part in a travel abroad with visits to designer workshops and companies (if the stay is for a full year in Bloc 2)
- Taking part to the Chocolate fair fashion show contest, ...
- Taking part to the end of year fashion show through an active involvement in the preparation.

## Guest lecturers/Guest administrative staff

We are open to exchanges with teachers from partner institutions to meet not only for creative and practical workshops (textile design, printing techniques, creation workshop...), but also for theory lessons (marketing, pattern, trends and knowledge of the fashion industry...).





# STUDY SCHEDULES

All the trainings are given in French!

## ERASMUS PROPOSALS IN BLOC 1

Warning, changes are likely to occur according to the CU organisation!

### Erasmus proposal in 1<sup>st</sup> Quarter

	ECTS
<b>PROJECTS DESIGN 1</b>	<b>14</b>
Fashion design .....	4
Workshop .....	8
Art drawing .....	2
<b>TECHNICAL THEORIES 1</b>	<b>4</b>
Technical drawing .....	1
Cutting – gradation .....	3
<b>TEXTILE RESSOURCES AND FASHION 1 (CHOICE FOR A TOTAL OF 4 OR 6 IF NO CRSH COURSES)</b>	<b>6</b>
Knowledge of fashion .....	2
History of fashion and costume .....	2
Technology of fabrics .....	1
Work organisation .....	1
<b>FRENCH Q1</b>	<b>5</b>
French .....	5
<b>BELGIAN CULTURE AND HERITAGE Q1</b>	<b>2</b>
Workshop .....	2
<b>TOTAL</b>	<b>31</b>

### Erasmus proposal in 2<sup>nd</sup> Quarter

	ECTS
<b>PROJECTS DESIGN 1</b>	<b>16</b>
Fashion design .....	4
Workshop .....	8
Art drawing .....	2
Jobs in the fashion industry* .....	2
<b>KNOWLEDGE OF THE PROFESSIONAL ENVIRONMENT 1</b>	<b>2</b>
Marketing .....	2
<b>TECHNOLOGICAL ANALYSIS 1</b>	<b>4</b>
Technology of fabrics .....	1
Work organisation .....	1
NTIC .....	2
<b>FRENCH Q2</b>	<b>5</b>
French .....	5
<b>BELGIAN CULTURE AND HERITAGE Q2</b>	<b>2</b>
Workshop .....	2
<b>TOTAL</b>	<b>29</b>

\* Jobs in the fashion industry only if organised

### Erasmus proposal in whole year

	ECTS
<b>PROJECTS DESIGN 1</b>	<b>30</b>
Fashion design .....	8
Workshop .....	16
Art drawing .....	4
Management techniques .....	2
<b>TECHNICAL THEORY 1</b>	<b>8</b>
Technical drawing .....	2
Cutting – gradation .....	6
<b>TEXTILE RESSOURCES AND FASHION 1 (CHOICE FOR A TOTAL OF 4 OR 6 IF NO CRSH COURSES)**</b>	<b>6</b>
Knowledge of the fashion industry .....	2
History of fashion and costume .....	2
Technology of fabrics .....	1
Work organisation .....	1
<b>FRENCH Q1</b>	<b>5</b>
French .....	5
<b>BELGIAN CULTURE AND HERITAGE Q1</b>	<b>2</b>
Workshop .....	2
<b>KNOWLEDGE OF THE PROFESSIONAL ENVIRONMENT 1 (CHOICE)**</b>	<b>2</b>
Marketing .....	2
<b>TECHNOLOGICAL ANALYSIS 1</b>	<b>4</b>
Technology of fabrics .....	1
Work organisation .....	1
NTIC .....	2
<b>FRENCH Q2</b>	<b>5</b>
French .....	5
<b>TOTAL</b>	<b>62</b>

\*\* Either CU 5 Marketing and CU 6 without NTIC, or full CU 6 and no CU 5



## ERASMUS PROPOSALS IN BLOC 2

Warning, changes are likely to occur according to the CU organisation!

### Erasmus proposal in 1<sup>st</sup> Quarter

	ECTS
<b>PROJECTS DESIGN 2</b>	<b>13</b>
Fashion design .....	4
Workshop .....	9
<b>TECHNICAL THEORY 2</b>	<b>4</b>
Cutting .....	4
<b>TEXTILE RESSOURCES AND FASHION 1 (CHOICE FOR A TOTAL OF 4 OR 6 IF NO CRSH COURSES)*</b>	<b>7</b>
History of fashion and costume .....	2
CAD .....	2
Art drawing .....	2
Technology of fabrics .....	1
<b>FRENCH Q1</b>	<b>5</b>
French .....	5
<b>BELGIAN CULTURE AND HERITAGE Q1</b>	<b>2</b>
Workshop .....	2
<b>TOTAL</b>	<b>31</b>

### Erasmus proposal in 2<sup>nd</sup> Quarter

	ECTS
<b>PROJECTS DESIGN 2</b>	<b>16</b>
Fashion design .....	5
Workshop .....	9
Art drawing .....	2
<b>TECHNICAL THEORY 2</b>	<b>3</b>
Technical drawing .....	3
<b>TECHNOLOGICAL ANALYSIS 2</b>	<b>4</b>
Work organisation .....	1
Technology of fabrics .....	1
Communication .....	2
<b>FRENCH Q2</b>	<b>5</b>
French .....	5
<b>BELGIAN CULTURE AND HERITAGE Q2</b>	<b>2</b>
Workshop .....	2
<b>TOTAL</b>	<b>30</b>

### Erasmus proposal in whole year

	ECTS
<b>PROJECTS DESIGN 2</b>	<b>29</b>
Fashion design .....	9
Workshop .....	18
Art drawing .....	2
<b>TECHNICAL THEORY 2</b>	<b>9</b>
Technical drawing .....	3
Cutting – gradation .....	6
<b>TEXTILE RESSOURCES AND FASHION 1 (CHOICE FOR A TOTAL OF 4 OR 6 IF NO CRSH COURSES)*</b>	<b>7</b>
History of fashion and costume .....	2
CAD .....	2
Art drawing .....	2
Technology of fabrics .....	1
<b>FRENCH Q1</b>	<b>5</b>
French .....	5
<b>BELGIAN CULTURE AND HERITAGE Q1</b>	<b>2</b>
Workshop .....	2
<b>TECHNOLOGICAL ANALYSIS 2</b>	<b>3</b>
Technology of fabrics .....	1
Communication .....	2
<b>FRENCH Q2</b>	<b>5</b>
French .....	5
<b>TOTAL</b>	<b>60</b>







# PRACTICAL INFORMATION

## ACADEMIC CALENDAR

**Autumn**  
Welcome days

**Spring**  
Welcome days

September    October    November    December    January    February    March    April    May    June    July    August

Christmas Holiday

Exam period

Spring Break

Exam period

Summer Holiday

Additional exam  
period in case  
of failure in  
January/June

**14.09**  
Start of the  
academic year

**December**  
End of Fall  
semester

**01.02**  
Start of Spring  
semester

**May**  
End of Spring  
semester





## APPLICATION

### APPLICATION DEADLINES:

> 1<sup>ST</sup> JUNE FOR THE FALL SEMESTER

> 1<sup>ST</sup> DECEMBER FOR THE SPRING SEMESTER

The **nomination** (Name + last name + study field + study period) **must be sent** by the home university to the international departmental coordinator (see contact persons on the back cover).

After receiving the nomination, he/she will **send the Erasmus application form**. It has to be filled in and sent back to him/her.

An **acceptance letter** will be afterwards delivered (within three weeks).

HELMo **requires the Learning Agreement (LA)** before the beginning of the Erasmus stay. This has to be approved by the departmental coordinators in both institutions.



## OTHER INFORMATION



### 1. ID, PASSPORT, VISA

It is recommended to check the website of the Belgian Diplomacy: [www.diplomatie.be](http://www.diplomatie.be).

EU students need to have a valid ID or passport (check which one you need to travel to Belgium), and, depending on your nationality, home country and country of birth, a temporary stay permit.

NON EU Students need to contact the Belgian's embassy in their country, have to prove they have sufficient incomes for their stay in Belgium. They also need a copy of criminal record and a medical certificate.

### 2. HEALTH INSURANCE

EU students need the European health insurance card (the blue one) to be covered by the social security in Belgium.

Non EU students need to contact their home health insurance to check what kind of documents they need in Belgium in order to be covered by a social fund.

### 3. ACCOMMODATION

HELMo does not provide any accommodation of its own. However, the ESN will help Erasmus students find something suitable.

Accommodation for students in Liège is usually rooms or small flats in private houses (called « Kots ») with a private bathroom and a kitchen corner with furniture, or rooms in campus dormitories with shared bathroom and kitchen.

For further information, do not hesitate to check the following pages:  
<https://www.helmo.be/CMS/Profils/International/EN/Students-IN/Practical-information.aspx#doc>.

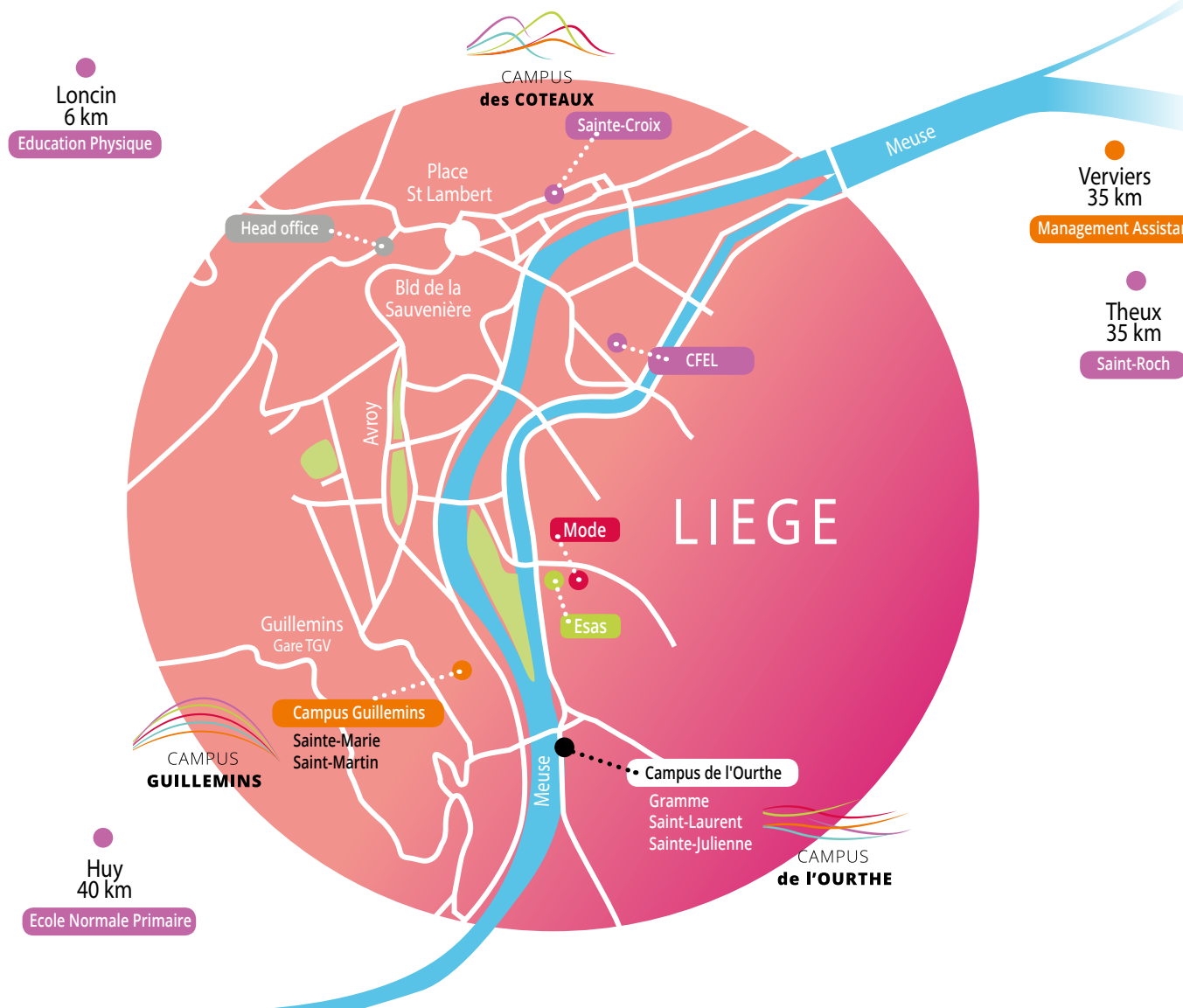
Students coming for an international week have to contact the organizer to find a weekly accommodation

# HELMo IS ALSO

Mont Saint-Martin, 45 - 4000 LIEGE  
Tél.: 04/222 22 00 - Fax: 04/221 60 43  
E-mail: info@helmo.be  
[www.helmo.be](http://www.helmo.be)

**HELMo**  
Haute Ecole  
Libre Mosane

## HELMo is also 11 institutes in 5 cities



This brochure was designed and made by the HELMo Communication Service, in association with the International Relations Office.

### Chief-Editor:

Nicolas CHARLIER,  
Communication Service Director,  
Mont Saint-Martin, 45 in 4000 LIEGE

### Updates:

Nicolas CHARLIER, Julie Guiot, Manon Habay and Martine Wilmots

### Photographs:

Samuel SZEPETIUK, Alice DRIESEN and Botond Horvath (Shutterstock.com)

**Graphic design:** La Maison du Graphisme

### Legal notes:

The HELMo Haute Ecole pays particular attention to the writing of this document. The HELMo Haute Ecole however does not guarantee the accuracy of the information. The reader must also be aware that this information is subject to changes, without prior notice.

The HELMo brochures are printed on paper made of recycled fibres and wood fibres from sustainable forest management.

HELMo is a member of:



# and +40 study programmes

Sectors	Fields of study	Programmes	Code	Campus	Departments	
Human and social sciences	Political and Social Sciences	Social worker	0923	HELMo ESAS	●	
		Social Engineering and Action	0923	HELMo ESAS	●	
	Legal sciences and criminology	Insurance	0412	HELMo Campus Guillemins	●	
		Law	0421	HELMo Campus Guillemins	●	
	Economic and management sciences	Management Assistant (Liège)	0415	HELMo Campus Guillemins	●	
		Management Assistant (Verviers)	0415	HELMo Verviers	●	
		International business	0416	HELMo Campus Guillemins	●	
		Accounting	0411	HELMo Campus Guillemins	●	
		International Cooperation	0320	HELMo Campus Guillemins + HEPL	●	
		Public Management	0413	HELMo Campus Guillemins + HEPL	●	
		Marketing	0414	HELMo Campus Guillemins	●	
	Psychology and educational sciences	Preprimary Teacher	011	HELMo Sainte-Croix	●	
		Primary Teacher (Liège)	011	HELMo Sainte-Croix	●	
		Primary Teacher (Huy)	011	HELMo Huy	●	
		Primary Teacher (Theux)	011	HELMo Saint-Roch	●	
		Lower secondary education teacher in French as a mother tongue and French as a foreign language	011	HELMo Sainte-Croix	●	
		Lower secondary education teacher in French and religion	011	HELMo Sainte-Croix	●	
		Lower secondary education teacher in English + Dutch or English + German	011	HELMo Sainte-Croix	●	
		Lower secondary education teacher in Mathematics	011	HELMo Sainte-Croix	●	
		Lower secondary education teacher in Sciences	011	HELMo Sainte-Croix	●	
		Lower secondary education teacher in Human sciences	011	HELMo Sainte-Croix	●	
		Lower secondary education teacher in health, social and home economics	011	HELMo Sainte-Croix	●	
		Lower secondary education teacher in French as a foreign language	011	HELMo Sainte-Croix	●	
		Lower secondary education teacher in Physical education	011	HELMo Loncin	●	
		Youth worker specialised	031	HELMo CFEL	●	
		Youth worker specialised in social and sports activities	031	HELMo ESAS	●	
		Specialised bachelor in educator in school environments	011	HELMo CFEL +HECH	●	
		Specialised bachelor in teaching children with special needs	011	HELMo Sainte-Croix	●	
	Health	Biomedical and Pharmaceutical sciences	Medical laboratory technologist	0914	HELMo Sainte-Julienne	●
			Midwife	0913	HELMo Sainte-Julienne	●
		Public Health sciences	Nurses responsible for general care	0913	HELMo Sainte-Julienne	●
			Specialised bachelor in paediatrics	0913	HELMo Sainte-Julienne	●
Specialised bachelor in mental Health			0913	HELMo Sainte-Julienne	●	
Specialised bachelor in intensive care and emergency medical aid			0913	HELMo Sainte-Julienne	●	
Motricity sciences	Specialised bachelor in psychomotility	0922	HELMo Sainte-Julienne	●		
Sciences and Techniques	Sciences	Business Informatics	0613	HELMo Campus Guillemins	●	
		Computing and systems : Automatic	0613	HELMo Saint-Laurent	●	
		Computing and systems : Systems security	0613	HELMo Campus Guillemins	●	
		Robotics	0613	HELMo Saint-Laurent	●	
	Engineering and technology	Industrial engineering	07	HELMo Gramme	●	
		Industrial engineering: sustainable Energy engineering	0712	HELMo Gramme	●	
		Textile - fashion techniques	0212	HELMo Mode	●	
		Techniques and sales	071	HELMo Saint-Laurent	●	



Any question? Need more? Don't hesitate! Come and visit us! 



**Dominique Thonnard**  
**International coordinator**  
d.thonnard@helmo.be

**HELMo Mode**  
Centre d'Affaires Natalis (CAN)  
Rue Natalis 2 - 4020 Liège  
Tél : +32 (0) 4 2236442  
Fax : +32 (0) 4 2237565  
[www.helmo.be/mode](http://www.helmo.be/mode)

helmo.be

